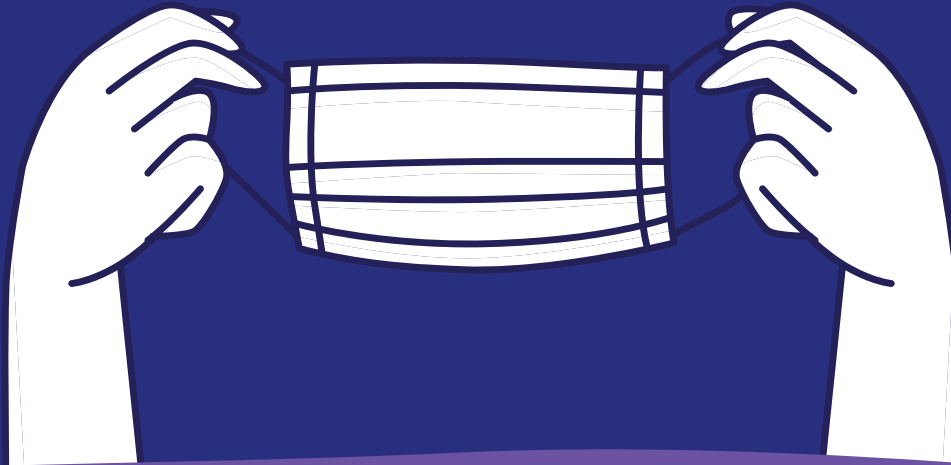




GROSS SCHECHTER DAY SCHOOL

# Covid Protocols

*Updated: February 2023*



## Infection

Students with a positive COVID test may return to school on Day 6 (after symptoms began) as long as symptoms are abating and no fever is present. The student must wear a mask indoors while at school for 5 days.

## Exposure

Students exposed may continue to come to school (unless symptomatic) but must mask indoors while at school for 5 days. Please note, regardless of infection/exposure there is no requirement to test negative before returning to school.

## Pre-school

Exposure for children 18 months and older: if the child is not able to wear a mask, they must stay home for the 5 days prior to returning.

If you have any questions, please don't hesitate to reach out to our school nurse, Kathy Konopka, who can be reached at (216) 763-1400 ext. 414 or by email at [clinic@grossschechter.org](mailto:clinic@grossschechter.org).